

Enter Through The Narrow Gate

Gareth Loh & Dan Adams

♩ = 135 ♪ = ♪

Intro/link: F

B♭

C

C7



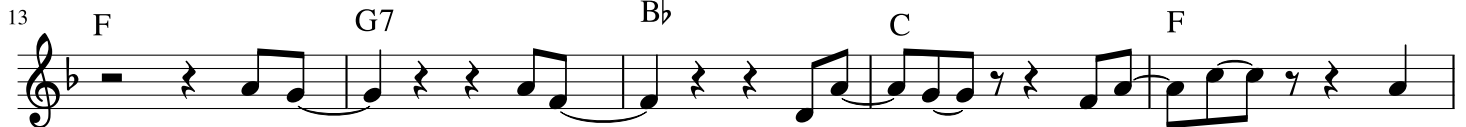
NOTE: repeats are not written properly. Need to show v1 (which is currently all in bars 5-12), chorus, v2 (not shown), chorus (with Bb C chords under 'found in Christ', not shown), bridge, verse 1 (with finish of 'keep following x3, not shown)



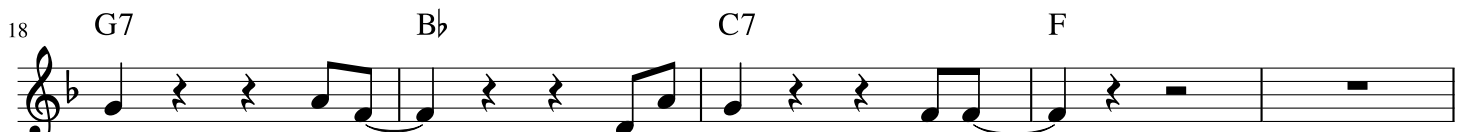
En - ter through the nar - row gate, that's what he says It's a squeeze but it's
Je - sus tells it ve - ry plain so that we hear Walk the narr - row way



def'nite - ly best to en - ter through the nar - row gate
that he made clear to en - ter: keep fol - low - wing Christ



Chorus: There are two gates One le — ads to li — fe Choose



care - fu - lly it's fou - nd in Christ



Bridge: Je - sus tells us how to walk the path that leads to life



Lo - ving - ly he warns us and says it is hard to find



Fa - ther will you help us, keep us on the nar - row way? Please help us to



lis - ten to what Je - sus had to say